



ASR-6150C (F)

Your best and reliable partner of DR



Z.A.C du BOIS MOUSSAY , 10 Avenue du colonel ROL-TANGUY - 93240
STAINS FRANCE

Tel: +33149988672, +33953341938

Fax: +33149988672 - Mob: +33678621481

socimed@socimed.com

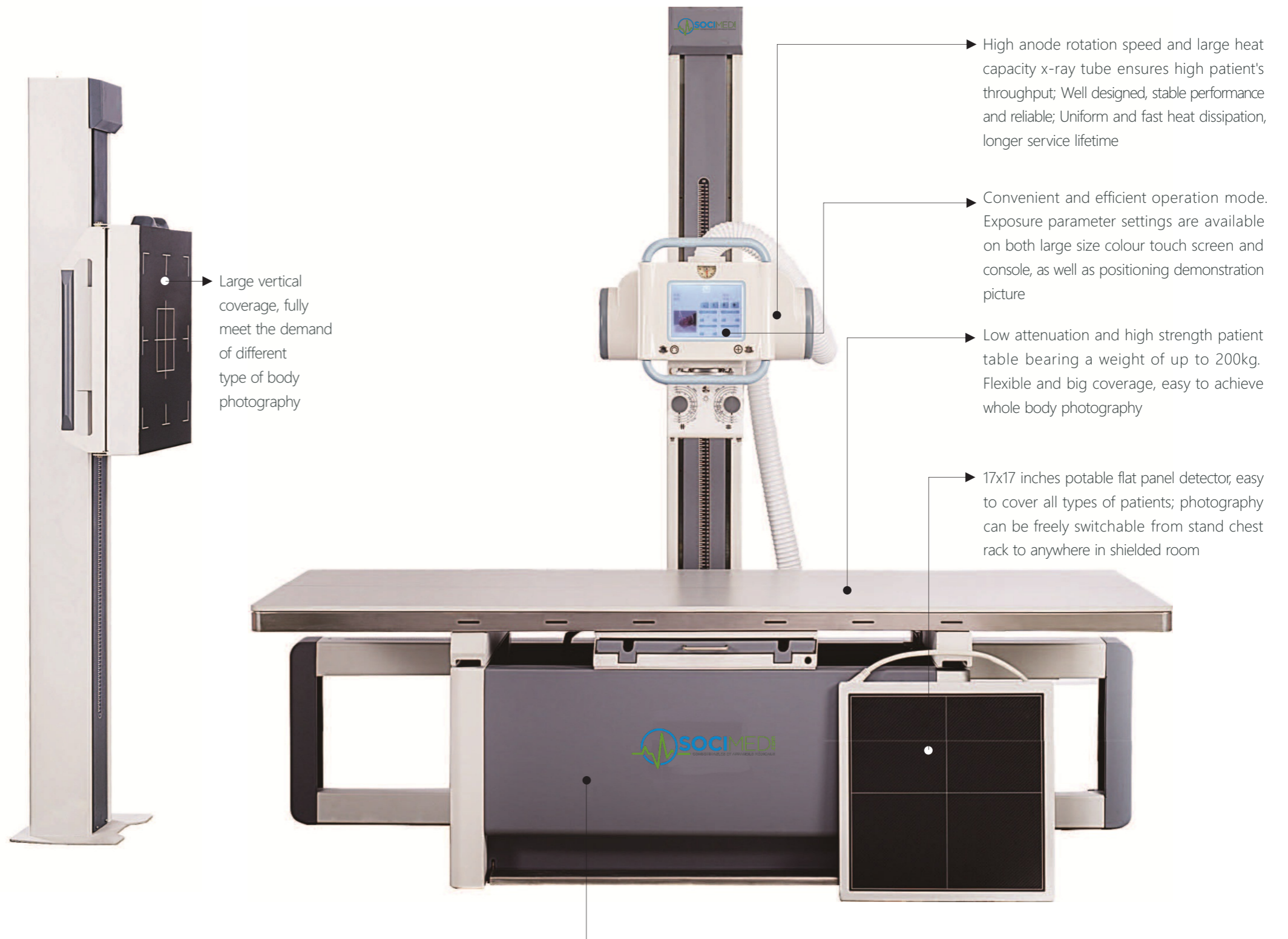
Insight Into life



High quality image chain & Excellent image



Integrated powerful workstation, friendly interface and streamlined workflow provide convenient and efficient operation



Large vertical coverage, fully meet the demand of different type of body photography

High anode rotation speed and large heat capacity x-ray tube ensures high patient's throughput; Well designed, stable performance and reliable; Uniform and fast heat dissipation, longer service lifetime

Convenient and efficient operation mode. Exposure parameter settings are available on both large size colour touch screen and console, as well as positioning demonstration picture

Low attenuation and high strength patient table bearing a weight of up to 200kg. Flexible and big coverage, easy to achieve whole body photography

17x17 inches portable flat panel detector, easy to cover all types of patients; photography can be freely switchable from stand chest rack to anywhere in shielded room

Integrated four-way floating patient table, easy to operate, can realize fast positioning without the second move management of patients (such as emergency patients), brings patients more care



Comprehensive Clinical Application

Meet a full range of clinical photography needs of any parts, any type of bodies, angle and any positionings. Easy to complete examinations of disabled patients, such as wheelchair and stretcher patients.



Flexible and efficient intelligent control

Nearby touch screen and remote console controls form intelligent a dual-mode operation. Operators can adjust exposure parameters and confirm positioning & patient's information by touch screen nearby on the basis of the condition of patients

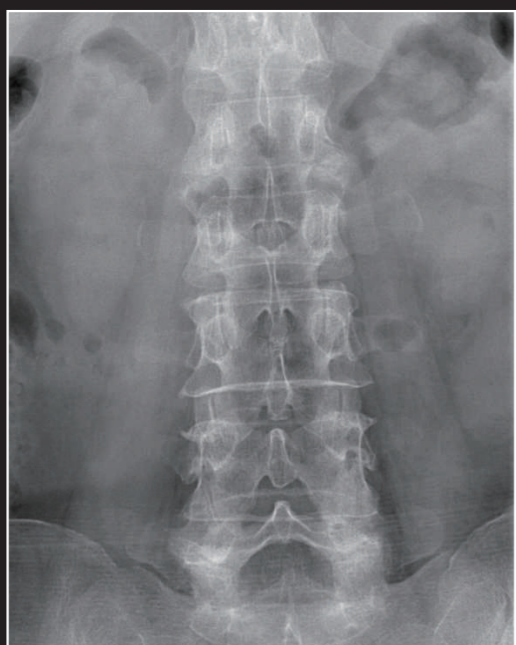
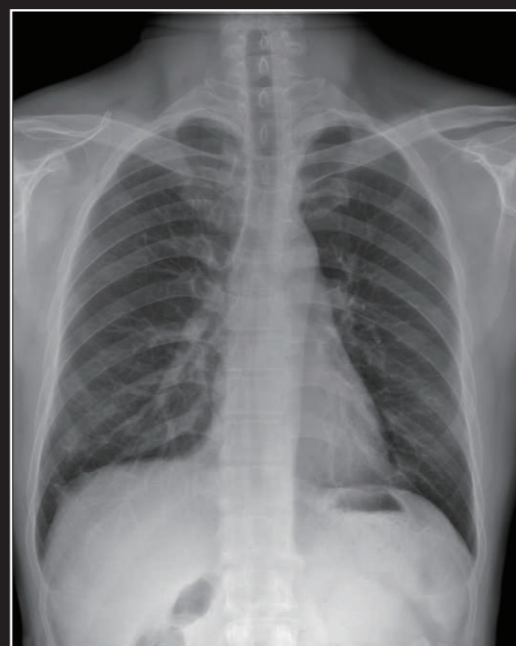


Multifunctional portable FPD

The maximum size 17x17 inches of portable FPD can be placed in the integrated floating patient's table to complete all supine and lateral X-ray examination. Also can be placed in the stand chest bucky for all standing radiography. Further, It can be placed on the ground, behind patient's back and any other positionings to complete photography.

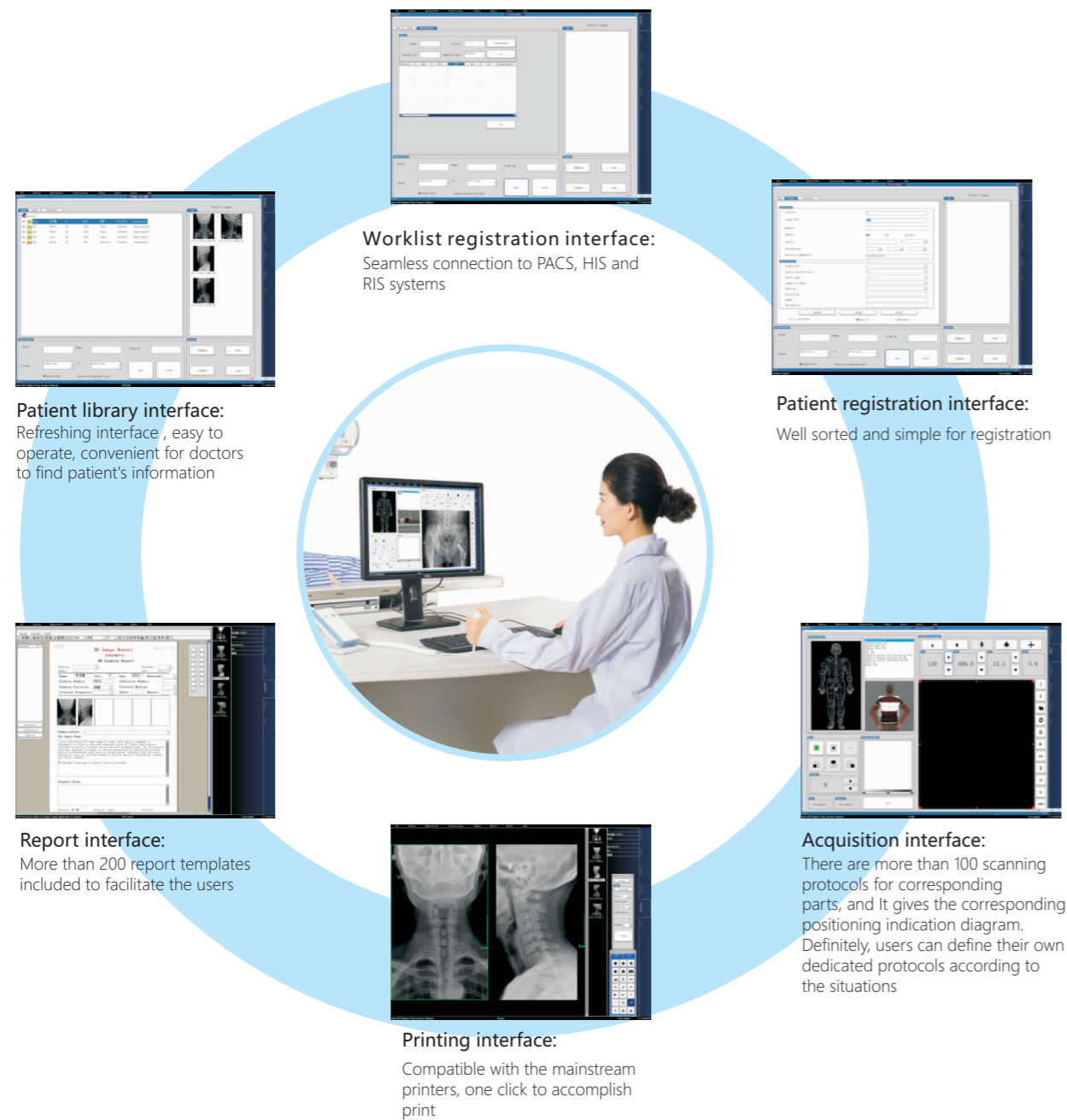


Clear clinical image Accurate diagnosis



Integrated workstation & Efficient workflow

Image acquisition and post-processing integrated workstation combined with registration, acquisition, storage, reporting, printing, transmission, query and other functions provides a friendly interactive user interface, user-friendly & simple operation process. In the meanwhile, It can fully meet the DICOM3.0 standards and achieve seamless connection to HIS/RIS/PACS systems



Service innovation creates maximum value for customers

- Service Response Within 24 Hours
- On-line Service Support
- Local Service Partner
- After-sales Maintenance Stations

